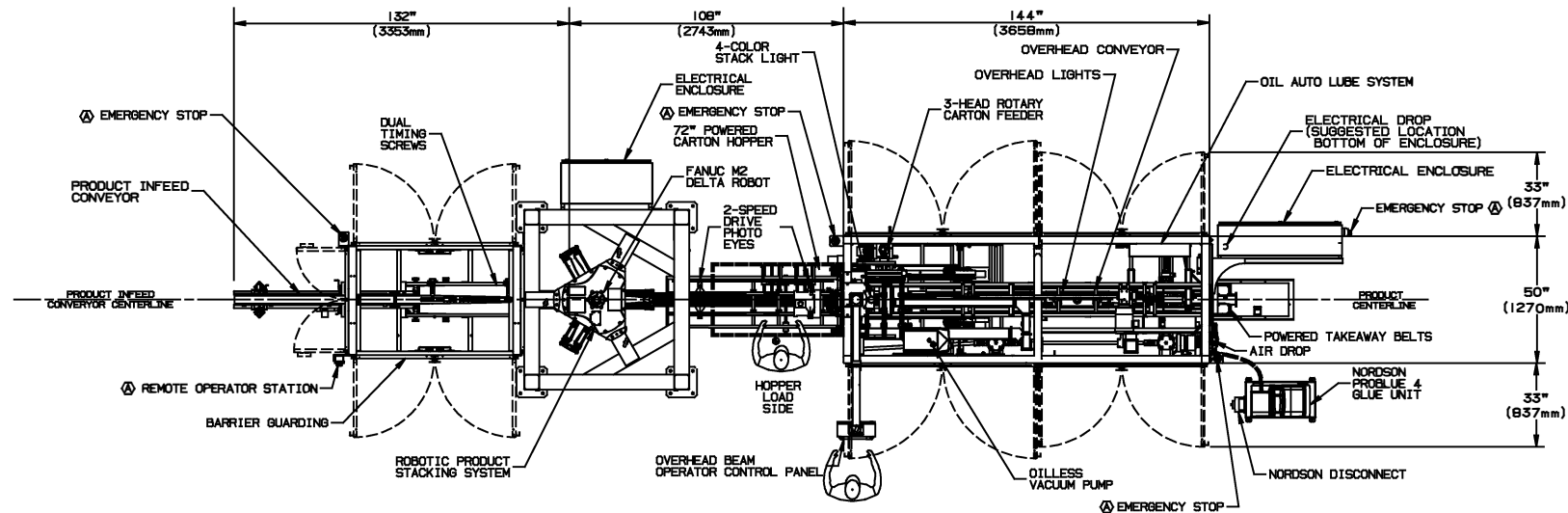


\*THE DIMENSIONS ON THIS FLOOR PLAN DRAWING ARE FOR GENERAL LAYOUT PURPOSES ONLY. PRECISE DIMENSIONAL DETAILS FROM DESIGN DRAWINGS CAN BE SUPPLIED UPON REQUEST.\*

DRAWING NUMBER: 5624BFP

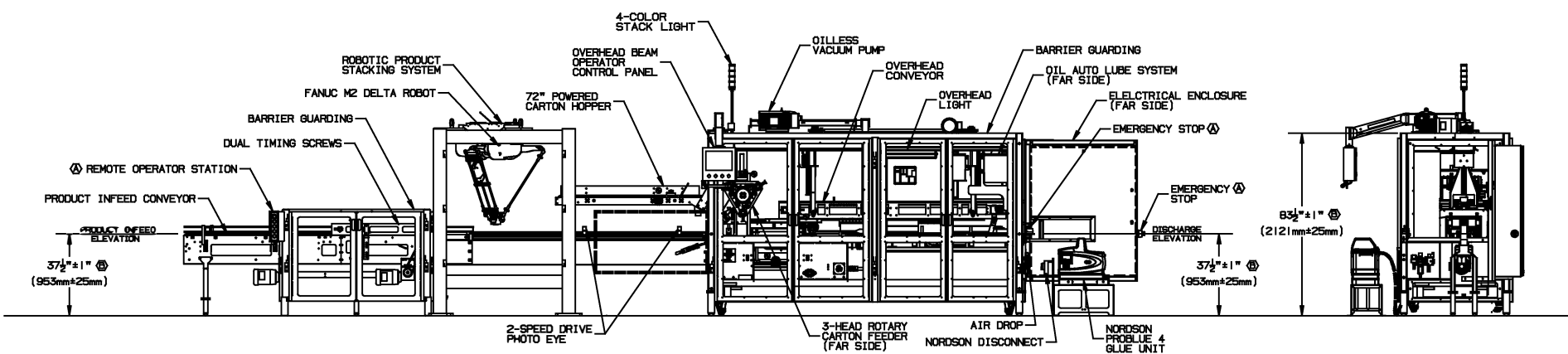


METRIC CONSTRUCTION

CONTINUOUS MOTION

NOTE:  
● DESIGNATES LOCATION OF DIGITAL READOUT

PLAN VIEW



SIDE ELEVATION

END ELEV.

PRODUCT & CARTONS:

- |  |   |
|--|---|
| A) PRODUCT: FACIAL CLEANSER (WET) "EMU" ROUND TUB<br>PATTERN: SINGLE<br>SLEEVE SIZE: 3.562" x 3.633" x 2.59"   | D) PRODUCT: FACIAL CLEANSER (WET) "FCW" SQUARE TUB<br>PATTERN: 1 OVER 1<br>SLEEVE SIZE: 5.011" x 2.094" x 4.34" |
| B) PRODUCT: FACIAL CLEANSER (WET) "EMU" ROUND TUB<br>PATTERN: 1 OVER 1<br>SLEEVE SIZE: 3.562" x 3.633" x 5.18" | E) PRODUCT: FACIAL CLEANSER (DRY) RECTANGULAR TUB<br>PATTERN: SINGLE<br>SLEEVE SIZE: 3.625" x 2.812" x 3.1"     |
| C) PRODUCT: FACIAL CLEANSER (WET) "FCW" SQUARE TUB<br>PATTERN: SINGLE<br>SLEEVE SIZE: 5.011" x 2.094" x 2.17"  | F) PRODUCT: FACIAL CLEANSER (DRY) RECTANGULAR TUB<br>PATTERN: 1 OVER 1<br>SLEEVE SIZE: 3.625" x 2.812" x 6.2"   |

APPROVED

BY: \_\_\_\_\_  
DATE: \_\_\_\_\_  
TITLE: \_\_\_\_\_  
NOTE: MANUFACTURING OF THIS EQUIPMENT WILL NOT BEGIN UNTIL RECEIPT OF THIS APPROVED PRINT.

|                |  |                                 |
|----------------|--|---------------------------------|
| SALES DEPT.    | ADD ENGINEERING DATA: DIMENSIONS ARE APPROXIMATE | DRAWN BY: JKY                   |
| BY: _____      | QUOTE: 20711 BA                                  | DATE: 12/05/14                  |
| DATE: _____    | MAX OPEN: 110                                    | SCALE: NONE                     |
| ENGINEER DEPT. | PRODUCT DESCRIPTION: FACIAL CLEANSER             | MATERIAL: STAINLESS STEEL FRAME |
| TITLE: _____   | CARTON SIZE(S): A) SEE TABLE ON LEFT SIDE        |                                 |
| BY: _____      | B) _____   |                                 |
| DATE: _____    | C) _____   |                                 |
|                | VOLTAGE: 480V/3ph/60hz                           | AMPERAGE (EST.): TBD            |
|                | AIR REQUIREMENT: 90 PSI @ 8-9 SCFM               | WATER REQUIREMENT: NONE         |



FLOOR PLAN - 9WM-110-PW

|          |  |       |         |
|----------|--|-------|---------|
| 2/26/14  | CHANGE CARTON BOTTOM TO FLOOR ELEVATION TO 37.5" ±1" PER DCN DATED 11/24/14    | DK    | JKY     |
| 11/24/14 | SHOW LOCATION FOR (4) EMERGENCY STOPS AND (1) 4-BUTTON REMOTE OPERATOR STATION | DK    | JKY     |
| DATE     | SYM  | NOTES | AUTH BY |